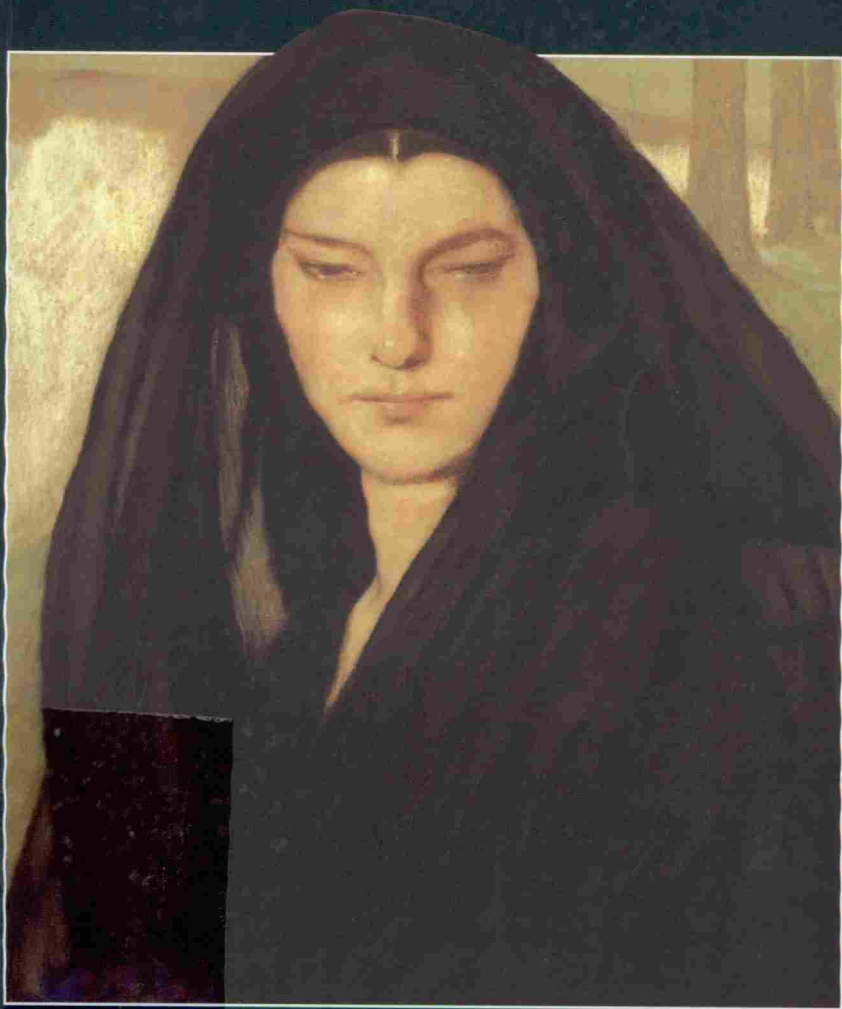


WORDSWORTH CLASSICS

The Plumed Serpent

D. H. LAWRENCE



THE PLUMED SERPENT



D. H. Lawrence

Introduction by
CEDRIC WATTS

جامعة أمحمد بوقرة - بومرداس
Université M'Hamed Bouguerra - BOUMERDES
المكتبة الجامعية
رقم 89-31/CED

1 كط

جامعة أمحمد بوقرة - بومرداس
Université M'hamed Bougara - Boumerdes
المكتبة الجامعية
رقم الجرد: 0.1.26.050



WORDSWORTH CLASSICS

WORDSWORTH CLASSICS

The Plumed Serpent

D. H. LAWRENCE

*Introduced by Cedric Watts,
Research Professor of English, University of Sussex.*

In this notorious late novel, Lawrence's pagan imaginings burgeon. Kate Leslie, an Irish widow touring Mexico, becomes gradually involved with a charismatic leader, and she enters a sexual relationship with his dark henchman.

As the two men conspire to revive the old Aztec religion and seize power, Kate is increasingly implicated in their 'blood consciousness', phallic propaganda and right-wing violence.

The Plumed Serpent abounds in the 'politically incorrect': Lawrence retains his power to shock. As a publisher once said, 'Anything to do with D. H. L. is rather dangerous.'



COMPLETE AND UNABRIDGED

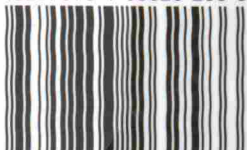
Cover Design by Robert Mathias

Cover Illustration *Enigme*, 1915 (chalk on paper)

By Firmin Baes (1874-1945)

Private Collection / © The Maas Gallery, London UK /
Bridgeman Art Library, London

ISBN 978-1-85326-258-6



9 781853 262586

Visit our website at www.wordsworth-editions.com